

TB 120

TECHNICAL BULLETIN

SAFETY ISSUE

For the Attention of : Service Engineers, Installers, Trade Customers, Training Dept, H & S Manager etc.....

Date : 11th November 2011

Product : Midilift SL

Subject : Pit Prop

Pages : 4

Originator : Stannah Lifts Ltd, Anton Mill, Andover, Hants SP10 2NX 01264 339090

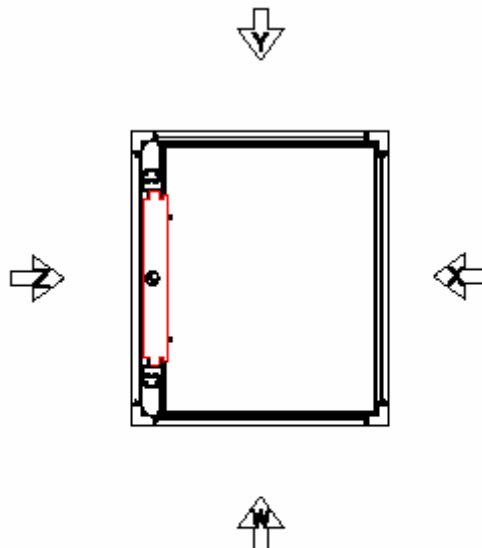
Detail

To ensure compliance with EN81-41 the pit prop has been redesigned to allow it to be deployed and then stowed away without the engineer entering the pit.

Summary

Installation of the pit prop and the catch (although redesigned) fits in the same manor as the existing. *Please note for transit the PP & catch are supplied fitted to the base plate, remove and discard PP transit screw.*

For lifts with the lower entrance on the 'W' & 'X' side an additional PP rod and holster should be supplied and fitted. If the lower entrance is on side 'Y' as the PP is still located behind the R/H guide it is deemed acceptable that the engineer can activate the PP without the need of the rod.



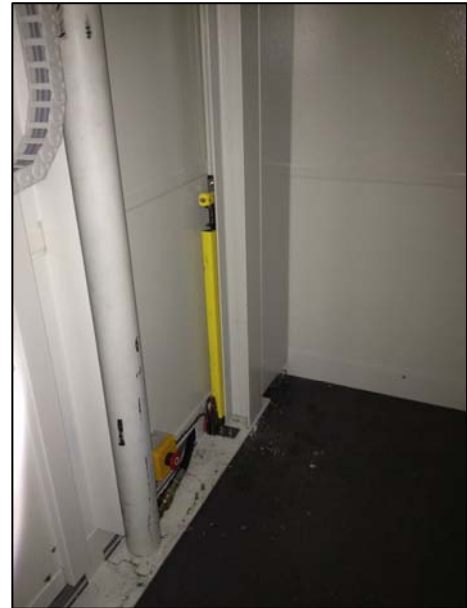
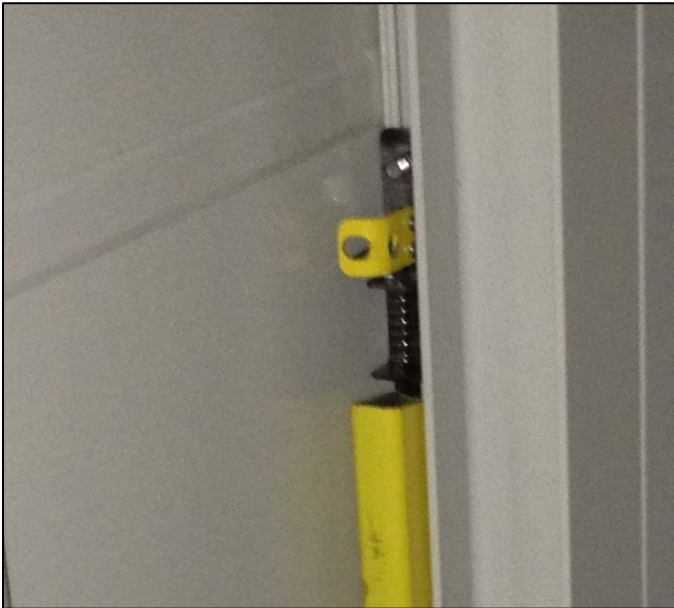
1. Holster & PP rod located in R/H corner on side W or L/H corner on side X, depending on entrance configuration. Use 4 x self drilling screws to secure being careful not to puncture cable behind. **Please note the holster & rod can only be fixed in the corner shown in the picture.**



2. Remove rod from holster.



3. New sprung loaded catch.



4. Depending on entrance, locate rod in either hole on yellow tab and lever up. PP should then drop down under its own weight. **The PP is now activated.**



5. To de-activate the PP use the rod (as shown) to push the PP back against latch until it 'clicks' into position.



6. Place rod back in holster making sure it butts-up to the back stop. Please note the rod locates in one plane only, this is to ensure the rod doesn't foul the underside of the platform.

